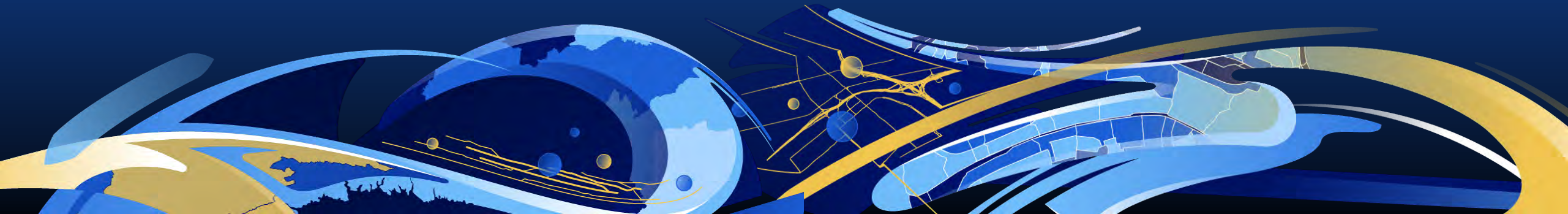


ArcGIS Hub: Collaborating and Engaging with Your Community

Todd Kingman – Esri Account Manager



Everyone wants their community to be...



Prosperous

Sustainable

Healthy

Transparent

Livable

Resilient

Collaborative

Safe

Innovative

How do we...

Protect the
Environment

Create More
Affordable Housing

Reduce
Homelessness

Use Less
Energy

Create
More Jobs

Conserve
Water

Make Commuting
Easier

Improve Earthquake
Preparedness

Increase
Recreation
Opportunities

Improve Emergency
Response Times

Increase Access for
Disabled People

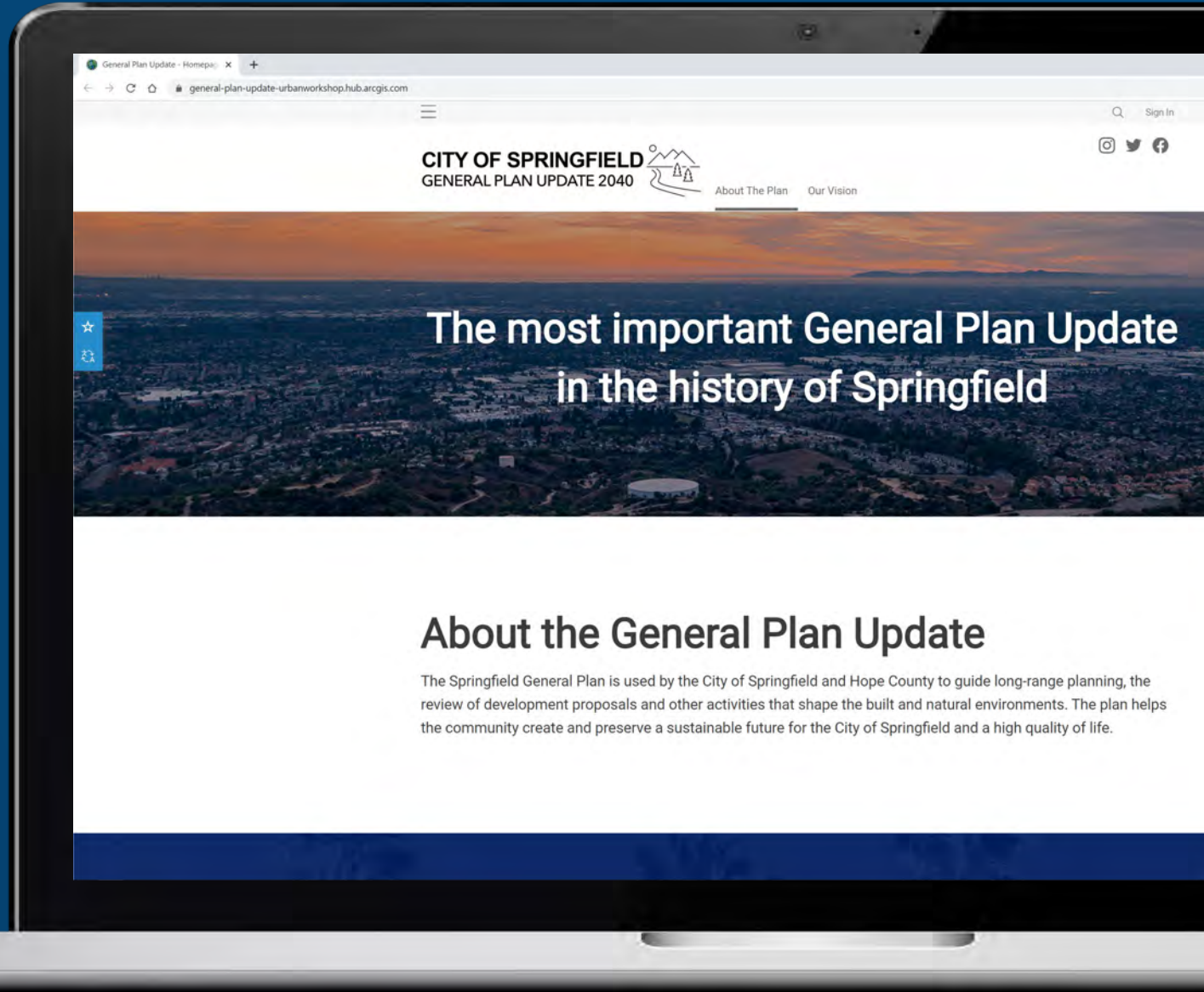
Reduce Traffic
Congestion





ArcGIS Hub

Deliver digital community engagement



Locate

Locate potential customers

Find

Find, vacant, commercial sites

Discover

Discover restaurants along your commute

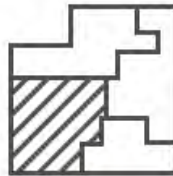
Browse the Map Gallery

Preview and download printable maps in the Map Gallery ranging from the Arts Festival to Voting P



Explore Data Categories

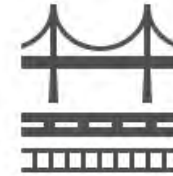
Browse through the different groups of data contained in the categories below. Data is continually updated from the systems that the City uses to manage assets, track permits, and gr



Base Data



Demographic Data



Infrastructure Data



Hydrology & Natural Features

Data Sharing

Any type of data, all in one place. Find what you need in one central location.

Inclusive Collaboration

Reach elusive demographics to broaden engagement and inform the community.

Your input is important.

Join us at a drop-in event to learn more and give input to the project team—or take our online survey.

[Take the survey](#)

Get Involved

List upcoming events so the community can get involved.

◀	February ▾ 2020 ▾						▶
Sun	Mon	Tue	Wed	Thu	Fri	Sat	
26	27	28	29	30	31	1	



JOIN US →



[Home](#) [Earth Day 2020](#) [About Us](#) [Our Work](#) [News](#)

EARTH CHALLENGE 2020

A Citizen Science Initiative



Earth Challenge 2020 will help fulfill our goal of engaging millions of

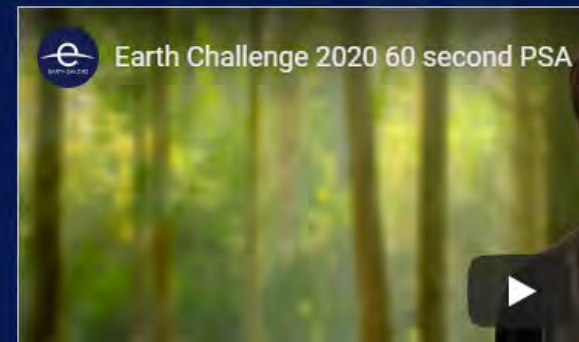
WANT TO LEARN MORE?

SIGN UP

Inspire Action

Make it personal. Become a part of the process.

Philippe Cousteau supports
Earth Challenge 2020



ArcGIS Hub

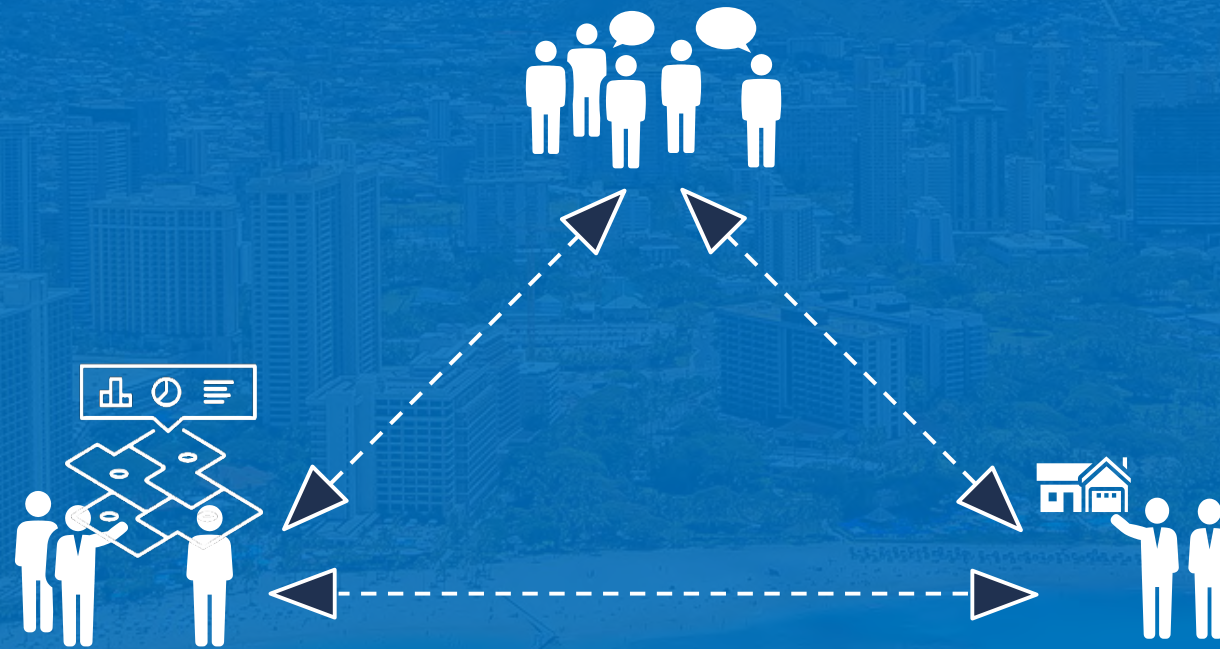
A cloud-based engagement platform that helps you work more effectively with your community

- Governments
- Businesses
- Universities
- NGOs
- Journalists
- Residents
- Volunteers



ArcGIS Hub

Citizens want to get involved on their own time and contribute to projects



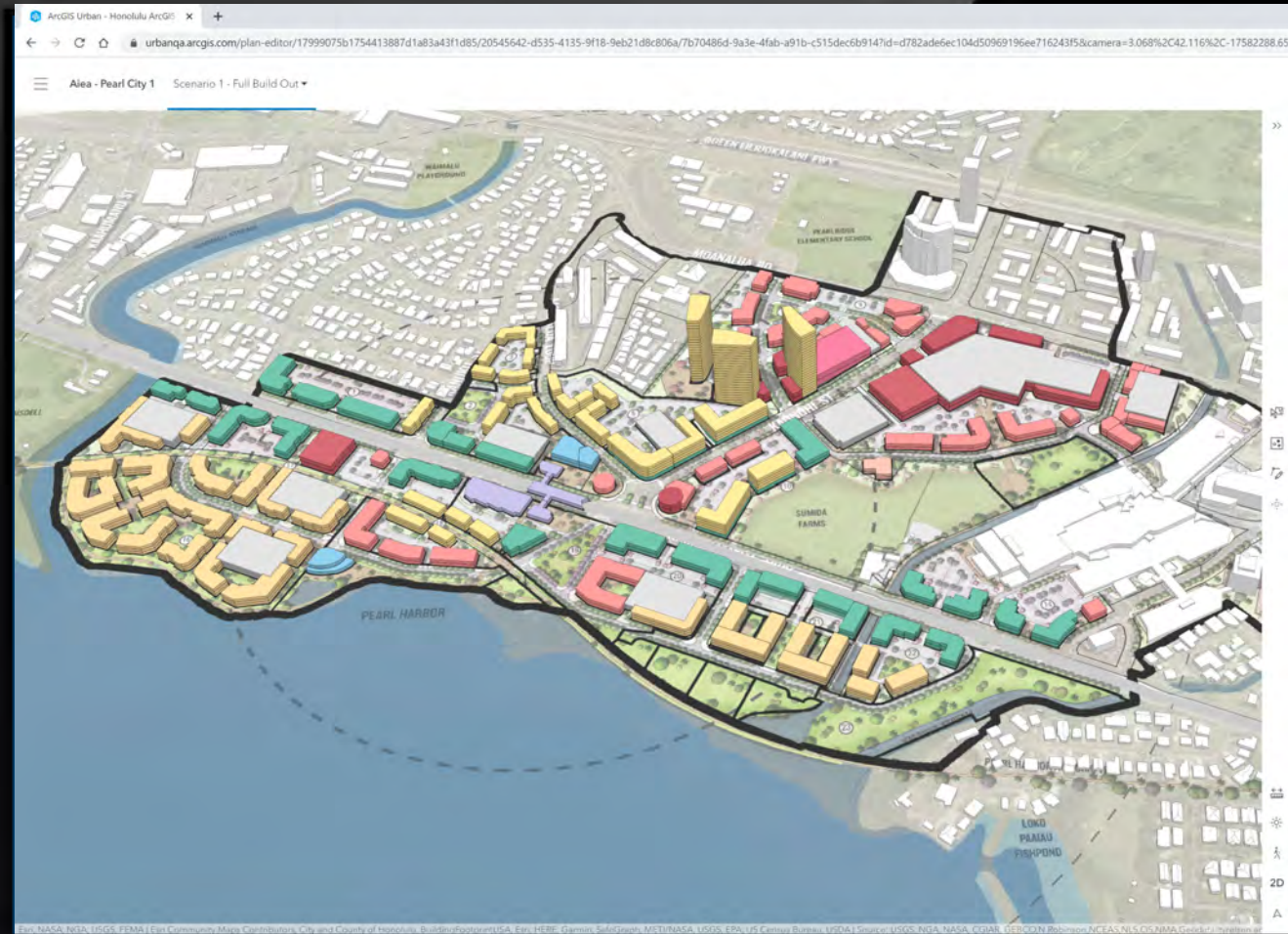
Planning Teams need tools to plan in-house, evaluate proposals and deliver digital engagement

Developers need access to data and regulatory information as a basis for investment and negotiation



ArcGIS Urban

A Digital Building and Planning Process



Aiea – Pearl City proposed plan in Urban

Supporting Key Planning Workflows

Current Planning



Track Project Citywide

Track Permits and Streamline Application Processing



Design 3D Scenarios

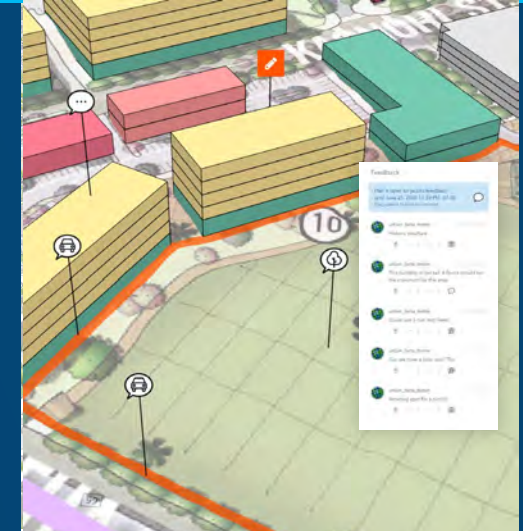
Analyze and Evaluate Land Use Potential & Zoning Change

Long Range Planning



Measure Impact & Guide Change

Identify and Evaluate Opportunity Sites to Development goals

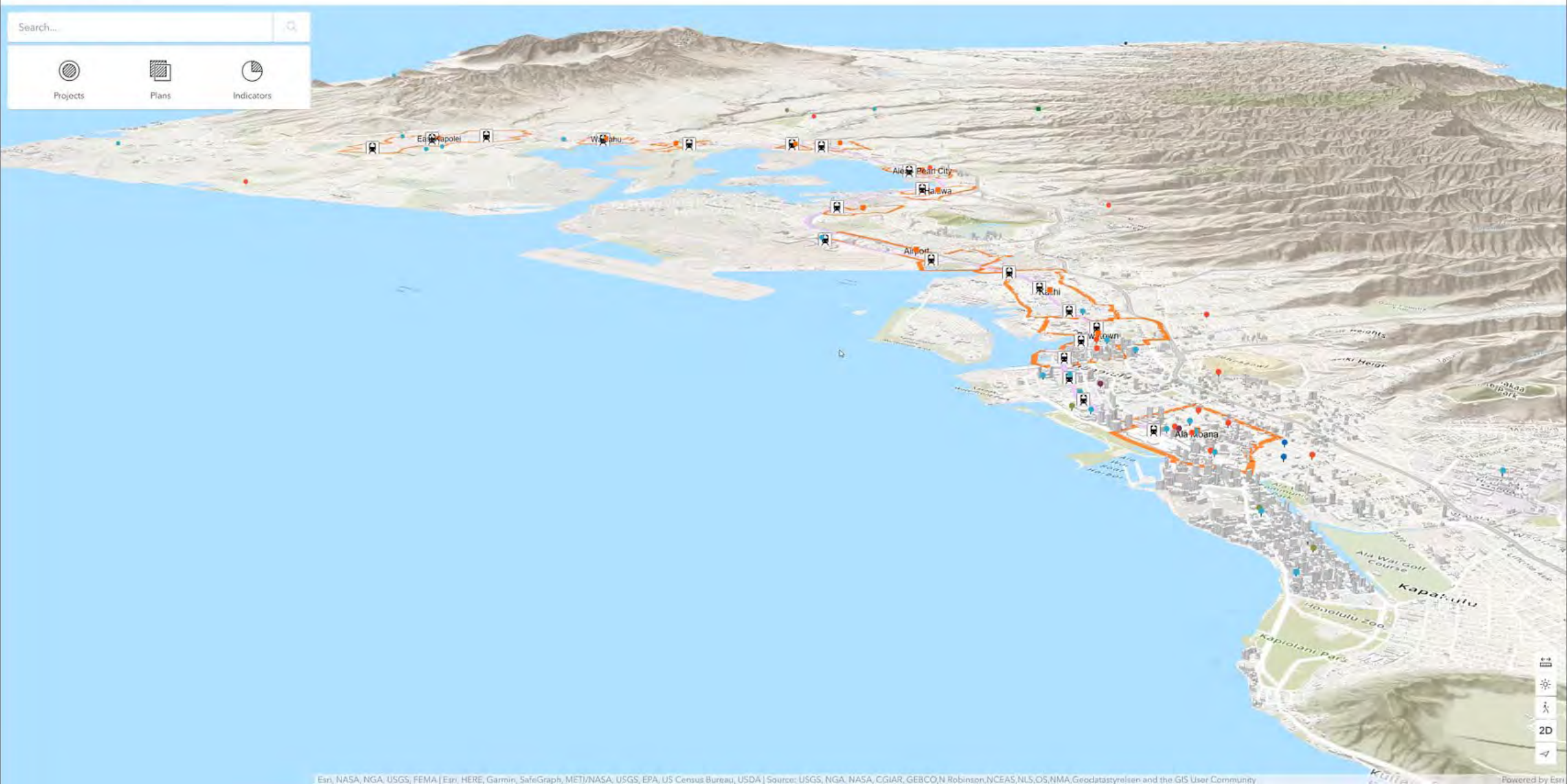


Drive Better Engagement

Deliver Digital Engagement to Key Planning Stakeholders

Search...

Projects Plans Indicators



ArcGIS Hub

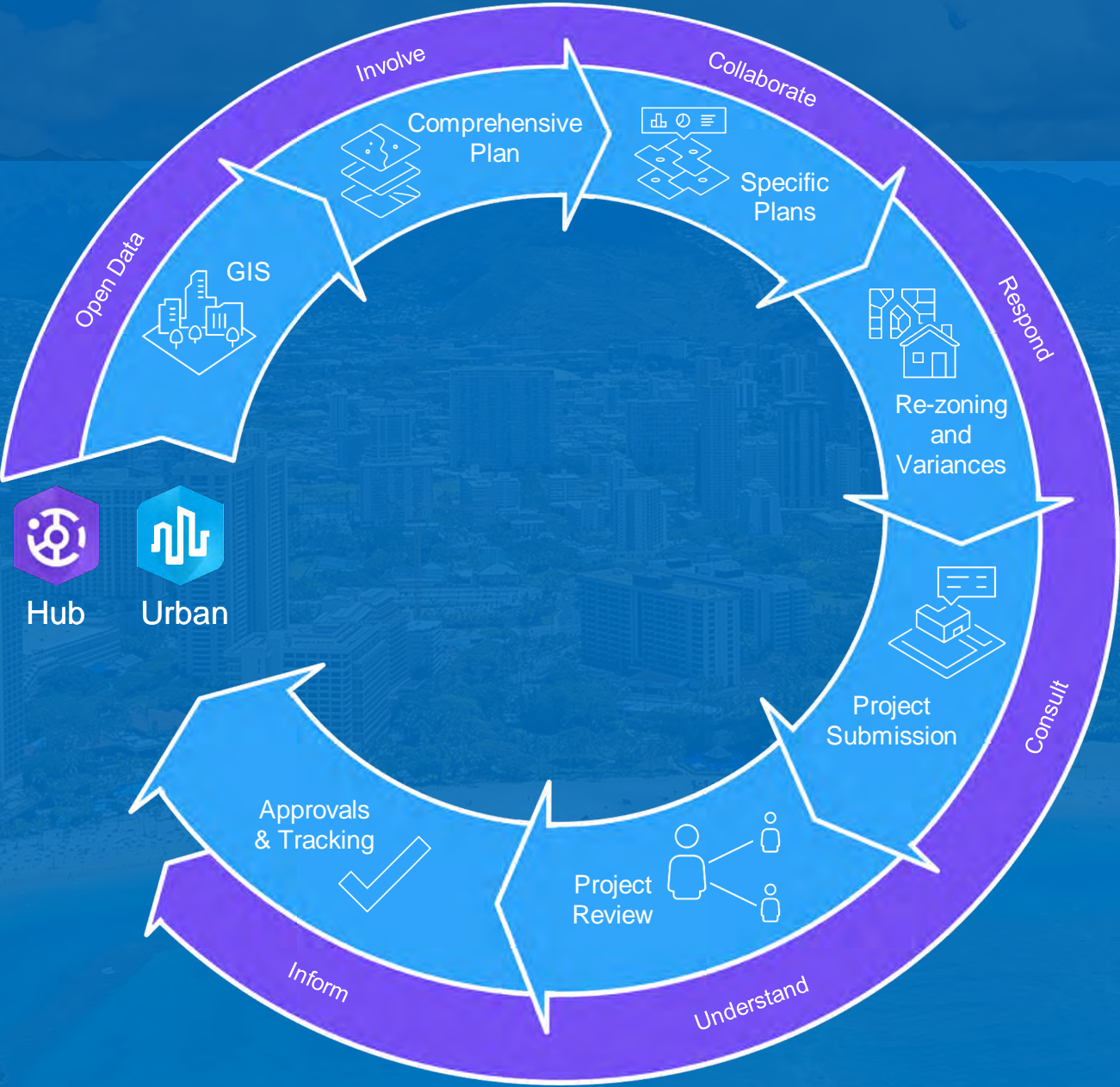


Hub



Urban

ArcGIS Hub



Hub Enabling Community Engagement

Sites

Search Tool & Catalog

Community Identities

Initiative Framework

Convey Information
on Important Topics

Share Data &
Content

Collect Data &
Feedback from
the Community

Organize
Collaboration

Basic



Premium

ArcGIS Hub

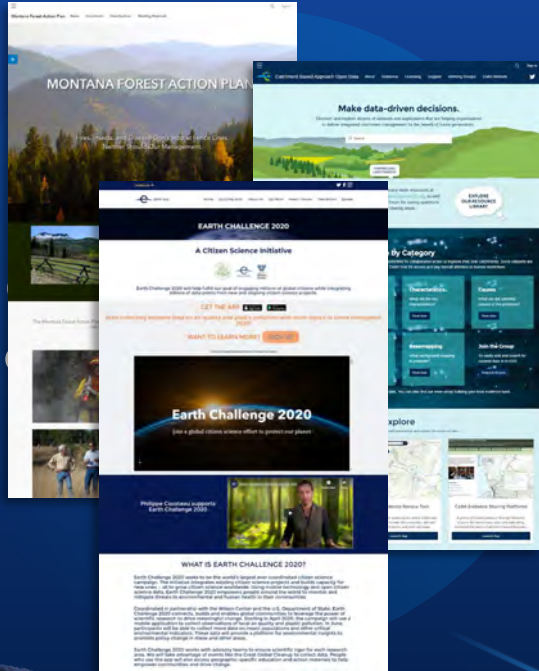
ArcGIS Online



Hub Enabling Community Engagement



Sites



Share Data & Content

Collect Data & Feedback from the Community

Organize Collaboration

Apps & Maps

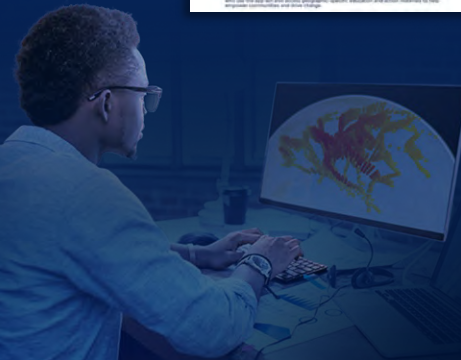
Dashboards

StoryMaps

Experiences

Plan Scenarios

BA Reports



- Customize
- Settings
- Header
- Theme
- Layout
- Footer

CITY OF SPRINGFIELD
GENERAL PLAN UPDATE 2040



About The Plan Our Vision



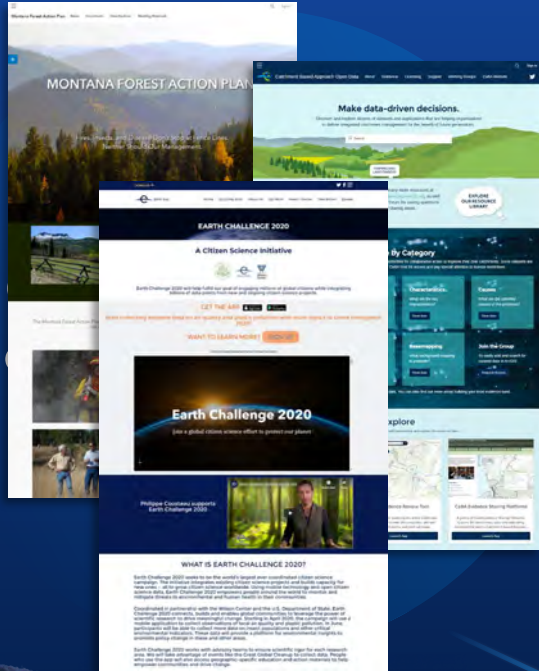
Purpose

This site is the Springfield General Plan Update, a visionary and aspirational data hub that includes a road map for the project, the vision for 2040 with a corresponding physical framework (please see The Spatial Strategy) and details on the areas of action that will guide implementation. The Springfield General Plan should serve as a road map for all projects moving forward, allowing everyone to understand the planning intent and trajectory.

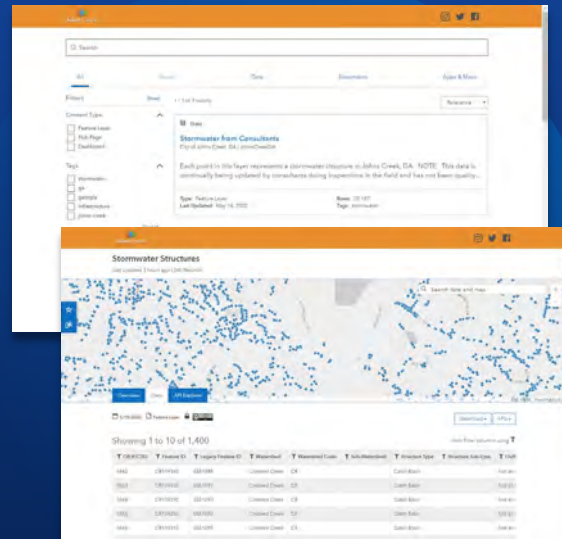
Hub Enabling Community Engagement



Sites



Search Tool & Data Download



Collect Data & Feedback from the Community

Organize Collaboration

Apps & Maps

Dashboards

StoryMaps

Experiences

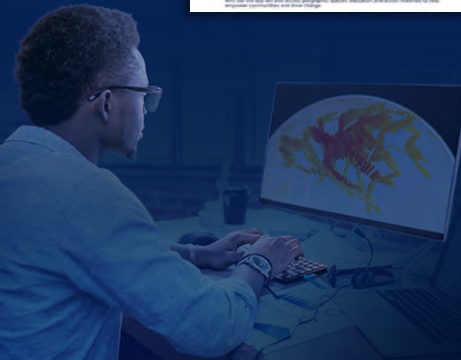
Plan Scenarios

BA Reports

Data Docs

Apps

Geospatial Infrastructure



← → ↻ Not secure | honolulu-cchnl.opendata.arcgis.com

CITY AND COUNTY OF HONOLULU HONOLULU.GOV HONOLULU GIS HOME

Honolulu Open Geospatial Data

FIND DATA

Search (i.e. parcels)

March 18 2019 - We have upgraded and refreshed our website
Here you can browse, search, preview, and download a variety of Honolulu geospatial datasets. Browse by category or enter key words in the search box to locate a dataset of interest. You can then read its description to learn more and explore attributes before downloading. A variety of formats exist when downloading such as shapefile, spreadsheet, KML, or API.

[Data Catalog](#) [Getting Started](#) [Contact](#) [New & Updated Data](#)



HAWAII STATEWIDE GIS PROGRAM
HAWAII STATE OFFICE OF PLANNING

Geospatial Data Portal



Open Data

Explore Data Categories

- Administrative Boundaries
- Business & Economy
- Census
- Climate
- Coastal & Marine
- Elevation
- Emergency Management & Public Safety
- Fresh Water
- Geodetic Control
- Hazards
- Historic & Cultural
- Historical Maps - BETA
- Human Health & Safety
- Imagery - BETA
- Infrastructure
- Land Use & Land Cover
- Northwestern Hawaiian Islands
- Parcels & Zoning
- Terrestrial
- Transportation

Hawaii Statewide GIS Program
Geospatial Data Portal

Hawai'i COVID-19 Applications and Data Resource Hub

Search Data and Apps

Enter keyword such as "Volcano"

Explore Data Categories

- Administrative Boundaries
- Business & Economy
- Census
- Climate
- Coastal & Marine
- Elevation
- Emergency Management & Public Safety
- Fresh Water
- Geodetic Control
- Hazards
- Historic & Cultural
- Historical Maps - BETA
- Human Health & Safety
- Imagery - BETA
- Infrastructure
- Land Use & Land Cover
- Northwestern Hawaiian Islands
- Parcels & Zoning
- Terrestrial
- Transportation

Featured Applications

- Elevation Service
- Marine Managed Areas
- CZM Appropriate Coastal Development
- HDOT Highways Data
- Census Demographic Profiles
- DHA Native Hawaiian Census Profiles
- SEO Renewable EnerGIS
- DOH Vaccine Locator

Helpful Links

- Web Services
- Help
- About
- State GIS

Terms of Use

Search

Data Set Views, Downloads, and APIs

Hawaii Statewide GIS Program

Data Catalog Getting Started Contact

Parks (Polygons) - Kauai, Oahu, Maui

Last updated 2 years ago | 968 Records

Overview Data API Explorer

4/4/2019 Feature Layer Custom License Download

Showing 1 to 10 of 968

objectid	name	own	tmk	type	createdby	agency	pub
1	Anini Beach Park	County	53005005	beach			12/29/1
2	Haena State Park	State	59008018	state			12/29/1
3	Haena Beach Park	County	59005019	beach			12/29/1
4	Haena State Park	State		state			12/29/1
5							12/29/1
6	Hanalei Beach Park	County	55001004	beach			12/29/1

Hawaii Statewide GIS Program

Data Catalog Getting Started Contact New & Updated Data

Parks (Polygons) - Kauai, Oahu, Maui

Last updated 2 years ago | 968 Records

Overview Data API Explorer

4/4/2019 Feature Layer Custom License Download APIs

[Metadata] Locations of parks (polygons) for the islands of Kauai, Maui and Oahu as of 1998 (see also parks (point) layer).
Source: Created by Office of Planning, 1998.
For more information please see metadata at [More](#)

About

Infrastructure
Shared By: HawaiiStateGIS
Data Source: geodata.hawaii.gov

View Metadata
Create Webmap
Create a Story Map

Attributes

Chart Map Visualization

agency Text	comments Text	createddate Date or Time	createdby Text	deliverydate Date or Time	featureuid Unique ID	modifiedby Text
modifieddate Date or Time	name Text	own Text	publishdate Date or Time	severity Number	sourceid Text	st_area(shape) Number
st_perimeter(shape) Number	tmk Text	type Text	SHOW MORE 2 Attributes			

Related Data

Data Parks (Points) - Kauai, Oahu, Maui Hawaii Statewide GIS Program HawaiiStateGIS	Data Parcels - TMK Plat Hawaii Statewide GIS Program HawaiiStateGIS
---	---

[Metadata] Locations of parks (points) for the islands of Kauai, Maui and Oahu as of 1998 (see...)

[Metadata] Description: TMK Plats for the State of Hawaii. Created May, 2018. Sources: City and...



Download APIs

Full Dataset

- Spreadsheet
- KML
- Shapefile

Filtered Dataset

- Spreadsheet
- KML
- Shapefile

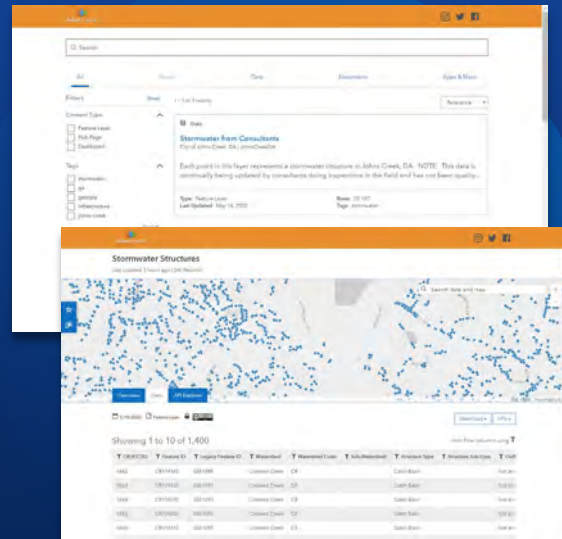
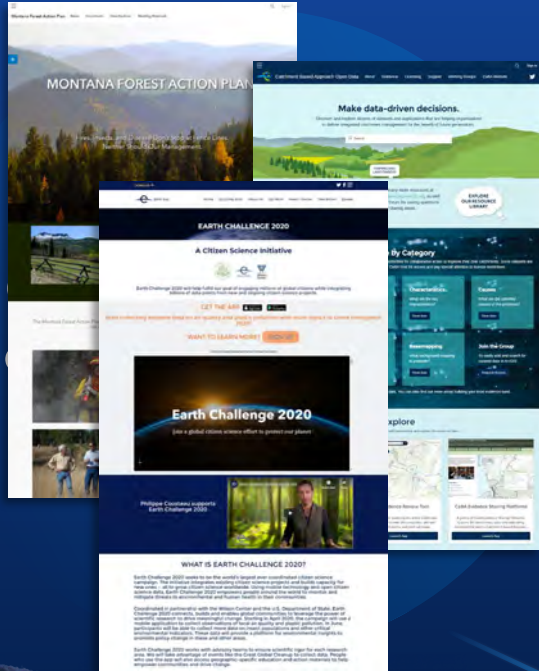
Hub Enabling Community Engagement



Sites

Search Tool & Catalog

Community Identities



Organize
Collaboration

Apps & Maps

Dashboards

StoryMaps

Experiences

Plan Scenarios

BA Reports

Data

Docs

Apps

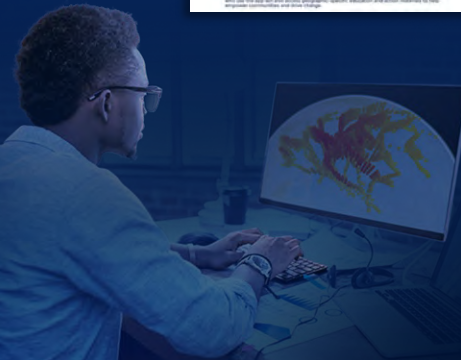
Events

Surveys

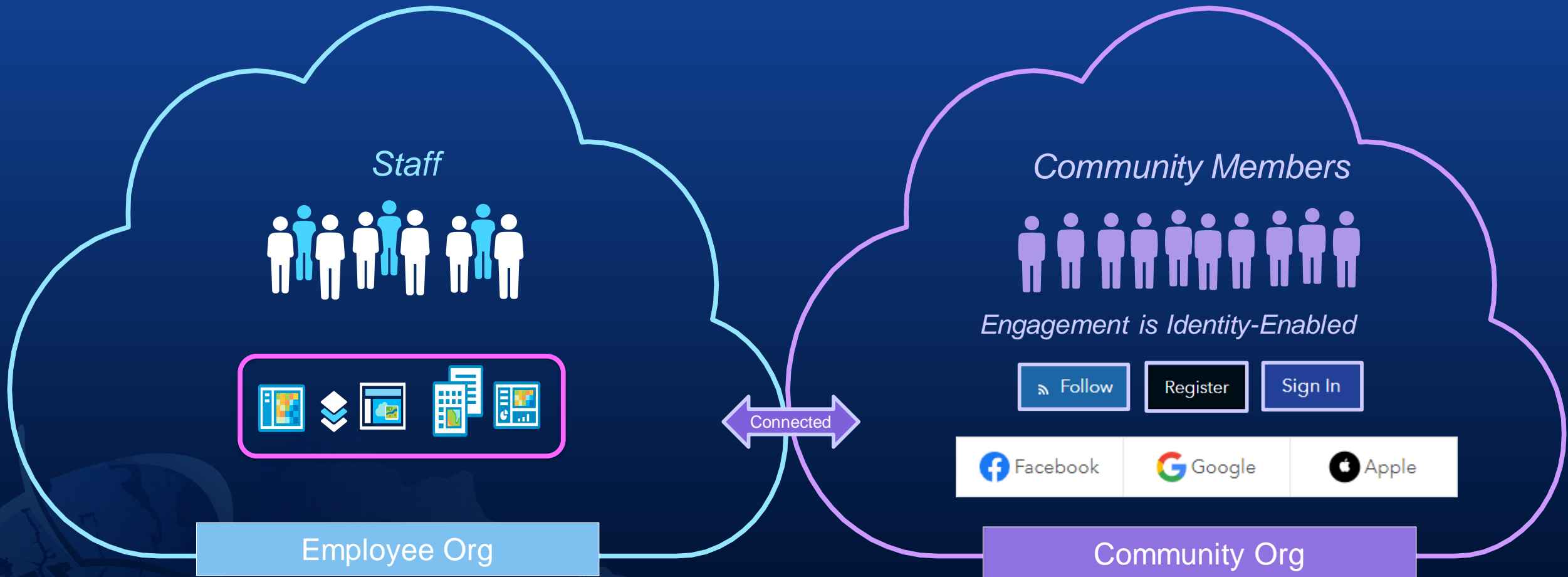
Comments

Crowdsourcing

Geospatial
Infrastructure



ArcGIS Hub Premium Adds Community



Example – Downtown Kentlands, Maryland



Want to join in the fun? Follow us for announcements and events!

Follow

Downtown: Energize! Kentlands

Explore retail, gather ideas, identify opportunities!

What do you think would be most successful in our neighborhood?
What are your thoughts on what our neighborhood?

voice be heard!

Community

Walkable

suburban

Want to join in the fun? Follow us for announcements and events!

So much to do!

Click on a category below for more information or search by business type, category, or both. Please see the mobile version if on your phone.

We would like to see more:

breakfast, unique, clothing, restaurants, family, affordable, variety, bars, service, healthy, variety, people, variety, bar, options, bars, convenient, healthy, variety

I've got something to say!

Kentlands/Lakelands residents and local business owners share thoughts

New Business or Opportunity?

What would you like to report?

Name of Retail and/or Address*

Location of Retail? (Optional)

Downtown Energize - Kentlands wants to access your ArcGIS Online account information

Sign in to SymGEO with

Facebook Google

ArcGIS login

Username

Password

Keep me signed in

Sign In Cancel

Forgot username? or Forgot password?

No account? Create a SymGEO Hub Community account.

Not a member of this organization? Sign in to your account on ArcGIS Online

Privacy

Kentlands Commercial

Map showing business locations and categories.

Category	Count
Restaurants	47
Fast Food	35
Medical	22
Yardwork	18
Personal Fitness	16
Home Furnishings	15
Major Auto Repair	15
Cleaning / Maintenance	15
Food / Beverage Retail	10
Learning	1
Real Estate	1
Bar	1
Postal Service	1
Gas	1
Entertainment	1

Occupied (V) vs Available (N) Space (Sq. Ft)

Occupied Businesses: 226

Available Spaces: 18

Kentlands 3D Visualization

Explore building and property information

Ideas for Retail

Name a few retail establishment examples you'd like to see (comma separated) - ex. Bakery, La Madeleine, Trader Joes, Brew pub, etc

What type of retail would you like to see more of?*

How would you describe the Kentlands / Lakelands in a word or two?

What should be done to increase traffic to our retail establishments?

What else should we know? (longer text / 1000 character max)

Submit



Example – City of Tucson, Arizona

Follow Project

Project Description

Interactive Map

Events

Timeline

Goals

Design Elements

Project Plans

Community Survey

Michigan/Fair Bicycle Boulevard
Extends from Kostka Avenue to Benson Highway for a total of 2.6 miles.

Cherry Bicycle Boulevard
Extends from Fair Street to Bantam Road for a total of 1 mile.

Greenway Bicycle Boulevard
Extends from Cherry Avenue to Drexel Road for a total of 1.7 miles.

Bantam Bicycle Boulevard
Extends from 1st Avenue to Country Club Road for a total of 2.1 miles.

Alvord Bicycle Boulevard
Extends from Santa Clara Avenue to the Liberty Boulevard for a total of 0.6 miles.

NAME	Michigan St/Fair St Bicycle Blvd
CATEGORY	CONNECTIVITY
SUBCATEGORY	BICYCLE BOULEVARDS
CLASS	BICYCLE BOULEVARD
STATUS	PENDING
WARD	1 and 5
EST_COST	\$502,921
FINAL_COST	
START_DATE	
END_DATE	
DEPARTMENT	TRAMP

Virtual Town Hall - Michigan/Fair Bicycle Boulevard
June 25, 2020 | 6:00 PM

What's happening and when?

- 1** Approval COMPLETE
In November 2018, voters approved Proposition 407 to build these and other bike and pedestrian improvements throughout the city.
- 2** Public Input SEPT-DEC 2019
We conducted seven open public meetings and received almost 300 survey responses, helping to drive the design of the project.
- 3** Design NOW - SUMMER
Our consultants are working on completing design of these bicycle boulevards.
- 4** Pre-Construction Meeting To be determined - SUMMER 2020
We will hold a meeting to answer questions about the construction process.
- 5** Construction FALL 2020

Why Bicycle Boulevards?
Bicycle Boulevards are roads that are designed to be safe for bicyclists. They are modified streets with traffic calming, safety improvements, and other features that make them more comfortable and safer for everyone, whether you're on a bike, on foot, or in a car. The boulevards become building blocks for community activities, such as tree planting, yoga or other community projects.

Project goals:

- Encourage walking and biking
- Provide comfortable alternatives to walking and biking on major streets
- Slow and reduce cut-through traffic
- Calm vehicle traffic to provide a more comfortable walking and biking experience

Project goals:

- Encourage walking and biking
- Provide comfortable alternatives to walking and biking on major streets
- Slow and reduce cut-through traffic
- Calm vehicle traffic to provide a more comfortable walking and biking experience
- Provide enhanced crossings
- Signalized crossings and other enhancements improve walking and biking across busy streets

Curb extensions for traffic calming and rainwater harvesting

Review Project Plans
The most current project plans will be listed here for you to view.

- 100% design plan sheets - NEW
These plans show details of the proposed improvements along the Bicycle Boulevard corridors. These are the most recent plans and show the current state of design of the project.
- 60% design plan sheets

[View/Download 100% Plan Sheets \(72MB\)](#)

100% design plan sheets - NEW

These plans show details of the proposed improvements along the Bicycle Boulevard corridors. These are the most recent plans and show the current state of design of the project.

[View/Download 100% Plan Sheets \(72MB\)](#)

Your input is important.

Join us at a virtual town hall meeting to learn more and give input to the project team—or take our online survey.

[Take the survey](#)

Hub Enabling Community Engagement

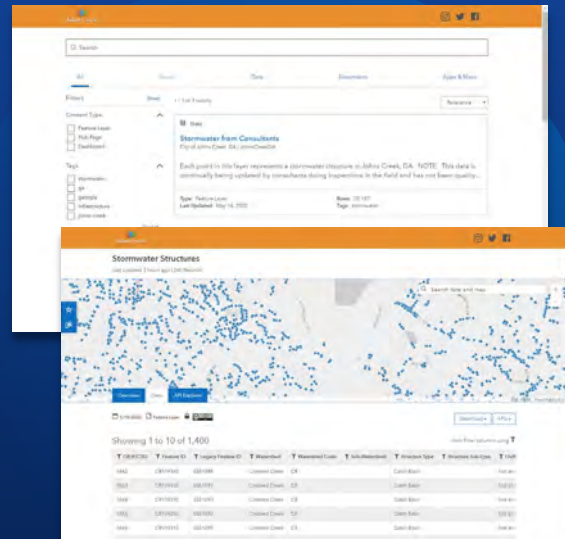
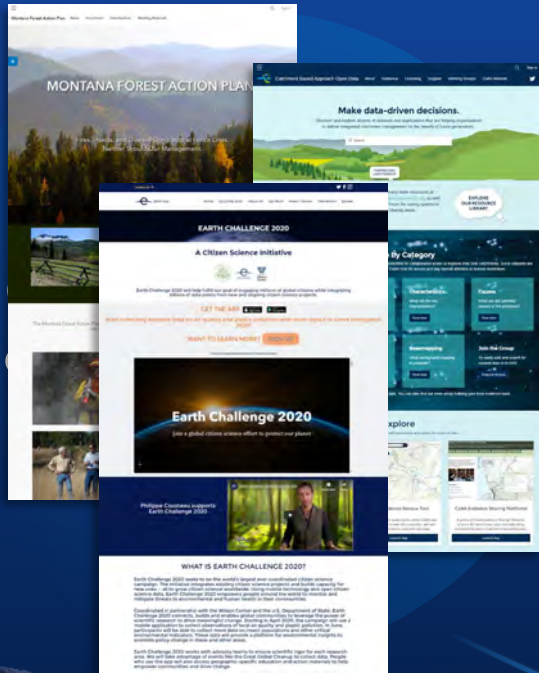


Sites

Search Tool & Catalog

Community Identities

Initiative Framework



Apps & Maps

Dashboards

StoryMaps

Experiences

Plan Scenarios

BA Reports

Data

Docs

Apps

Events

Surveys

Comments

Crowdsourcing

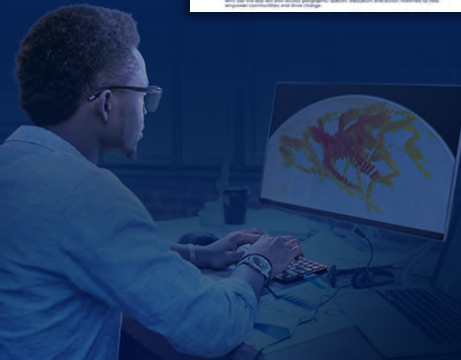
Event Creation

Content Editing

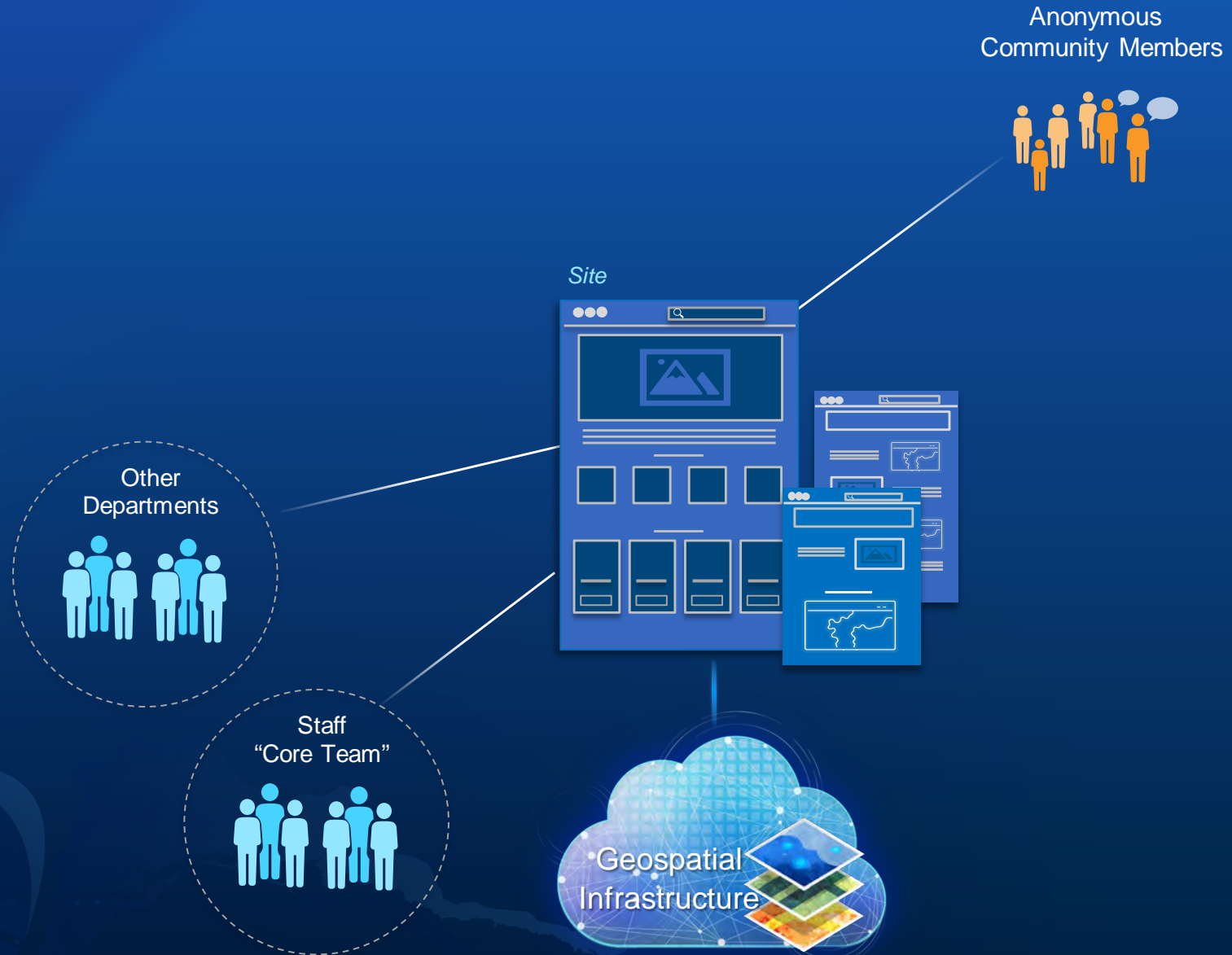
Data Contribution

Teams

Messaging



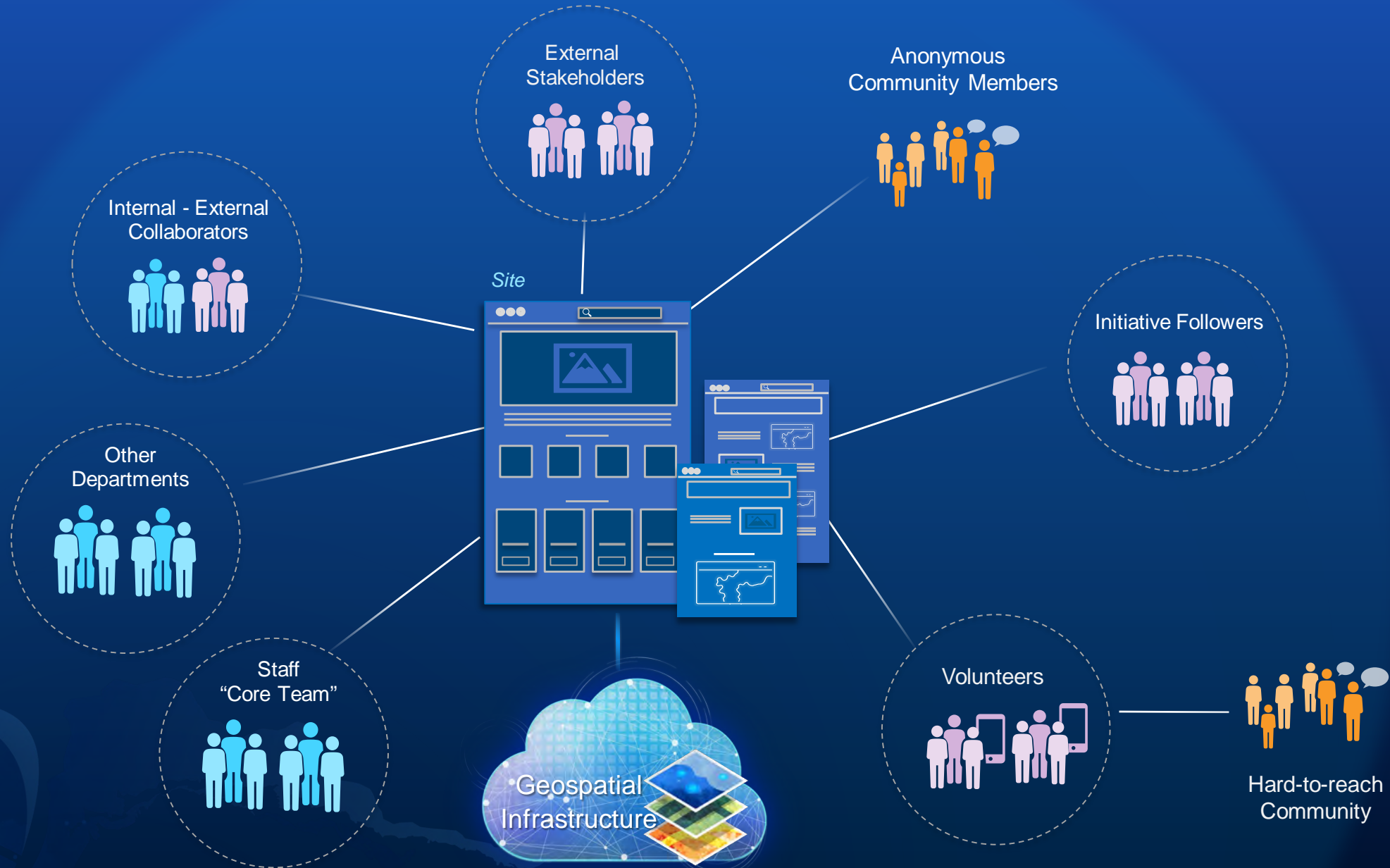
Team-Enabled Collaboration and Engagement



Team-Enabled Collaboration and Engagement

 Staff & Contractors

 Community Members with Identity



Initiative Framework

Organizing people, content, feedback, and action



- Sites & Pages
- Apps
- Data & Content Sharing
- Feedback & Data Collection
- Team Management
- Community Management
- Performance Tracking

New & Updated Templates

- Citizen Problem Reporter
- Equitable Property Value
- Emergency Response
- Promoting Transparent Elections
- Coronavirus Recovery

- User Guides Added to All



Initiative Template

Citizen Problem Center

ArcGIS_Hub

Use public feedback to deliver world-class service in our community.

Activate Initiative



Initiative Template

Emergency Response

ArcGIS_Hub

Provide the public with authoritative emergency information during an incident ...

Activate Initiative



Initiative Template

Coronavirus Recovery

ArcGIS_Hub

Reopening our community in a safe and effective way.

Activate Initiative



Initiative Template

Equitable Property Value

ArcGIS_Hub

Ensuring fair and equitable property appraisal for all property owners

Activate Initiative



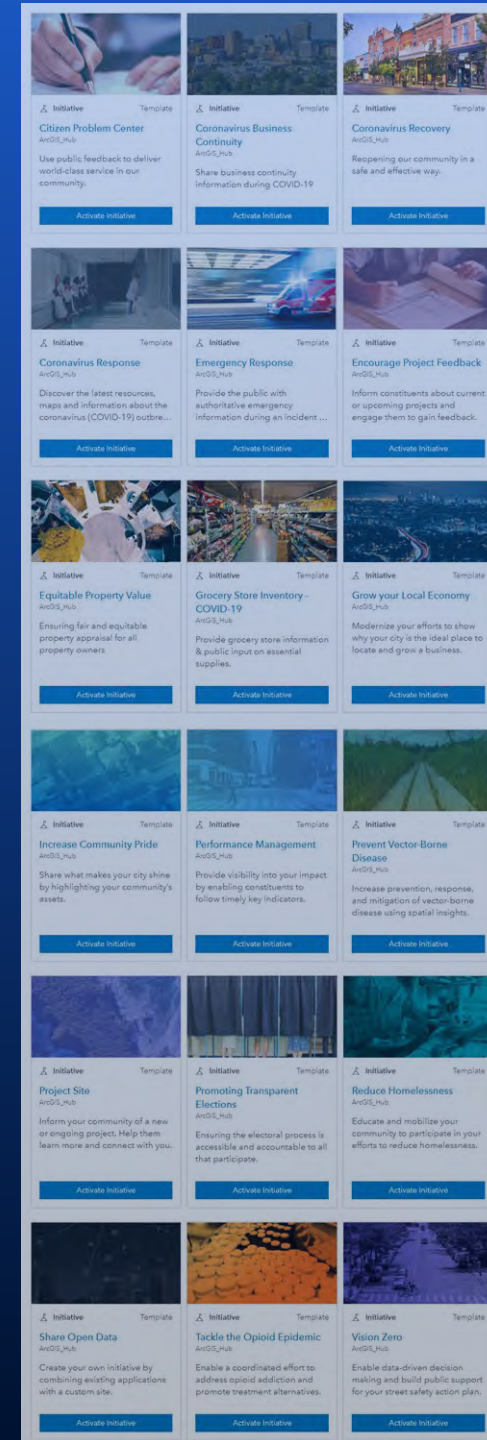
Initiative Template

Promoting Transparent Elections

ArcGIS_Hub

Ensuring the electoral process is accessible and accountable to all that participate.

Activate Initiative



Released Templates Available to Hub Basic Users



Template

Coronavirus Response

ArcGIS_Hub

Discover the latest resources, maps and information about the coronavirus (COVID-19) outbre...

Activate Template



Template

Coronavirus Business Continuity

ArcGIS_Hub

Share business continuity information during COVID-19

Activate Template



Template

Grocery Store Inventory - COVID-19

ArcGIS_Hub

Provide grocery store information & public input on essential supplies.

Activate Template

Hawaii COVID-19 Hub Sites

County of Hawaii COVID-19 Resources

Travel to Hawaii County COVID-19 Quarantine Modification / Exemption Request More

Help Keep Us Safe

COUNTY OF HAWAII COVID-19
Data provided by Hawaii District Health Office (may conflict with State Website due to reporting times)

Cumulative # COVID-19 Cases
974

Active Cases
249

Cumulative # Recovered Cases
725

Definitions for Dashboard:

Active Cases are individuals who are under isolation and quarantine. Isolation is applicable to any positive, confirmed case of COVID-19. Quarantine is applicable to individuals in "High Risk" category, required to remain in a designated facility, separate from others, and monitored until recovered.

Recovered cases are individuals who no longer are symptomatic and have displayed no symptoms over a 72 hour period.

Cumulative is an accumulated total of all cases over a period of time from Jan 1, 2020 till the end of the pandemic.

FOR HAWAII COUNTY

This program will provide rent or mortgage payments not to exceed \$2,000 per month (March-December 2020) for eligible households at or below 140% of the area median income who were affected by Covid-19.

GET YOUR DOCS READY - APPLICATIONS OPEN NOW

Rent and Mortgage Assistance Program (RMAP)

HAWAII COUNTY
ECONOMIC
OPPORTUNITY COUNCIL

Hawaii COVID-19 Response

Hawai'i COVID-19 Response
For the latest status of COVID-19 in Hawai'i

Hawaii Statewide GIS Program COVID-19 Dashboard

Confirmed Cases
1,258
(Reported in the Last 14 Days)

Total Confirmed Cases
13,853

Total Hospitalized
988

Total Deaths
185

Confirmed Deaths
10,947

Statistics Per County

Hawaii County
18 Confirmed Cases
10 People Hospitalized
486 Confirmed Deaths
100 Reported from Suburbs

Honolulu County
10 Confirmed Cases
10 People Hospitalized
12,417 Confirmed Deaths
100 Reported from Suburbs

Maui County
0 Confirmed Cases
0 People Hospitalized
0 Confirmed Deaths
0 Reported from Suburbs

Molokai County
0 Confirmed Cases
0 People Hospitalized
0 Confirmed Deaths
0 Reported from Suburbs

Other Counties
0 Confirmed Cases
0 People Hospitalized
0 Confirmed Deaths
0 Reported from Suburbs

Click here to open the COVID-19 Dashboard fullscreen in a new Tab.

COVID-19 Testing Locator

Click here to open the COVID-19 Testing Locator fullscreen in a new Tab.

Coronavirus Applications

- COVID-19 Mortality Risk Calculator
- Healthcare Center Locator
- Medicare Approved Health Care Facilities
- State Licensed Health Care Facilities
- High Risk Populations per CDC
- Impact planning for COVID-19
- COVID-19 Dashboard
- Food Resources During COVID-19 Crisis
- Childcare, Food (Kaiki and Kupuna), Screening Sites
- Social Distancing Scorecard
- Genomic Epidemiology of COVID-19
- DOH COVID-19 Updates

CRISIS

Key Strategies



CRISIS

An Integrated System for Managing Response



Enables Better Understanding & More Informed Action . . .

ArcGIS Hub Examples

City/County	Planning Focus	URL
Salt Lake City	Municipal Services District - Planning and Development Services	https://pds-gslmsd.hub.arcgis.com/
Raleigh	Raleigh Strategic Plan	https://strategic-plan-ral.opendata.arcgis.com/pages/safe
New Haven	New Haven City Plan Commission	https://city-plan-commission-newhavenct.hub.arcgis.com/
Kentlands	SymGeo - Downtown: Energize! Kentlands	https://downtown-energize-kentlands-symgeo.hub.arcgis.com/
Sheridan City	Kendrick Pool Project	https://kendrickpoolproject-interstateeng.hub.arcgis.com/
City of Tucson	Roger Road Pedestrian Safety & Walkability	https://tucsondelivers.tucsonaz.gov/pages/roger
City of Tucson	Tucson Delivers Better Streets	https://tucsondelivers.tucsonaz.gov/pages/better-streets
Jersey City	Jersey City Master Plan	https://ourjc-jerseycity.hub.arcgis.com/
Coral Gables	Flagler Section - Community Vision Workshop	https://flagler-section-community-vision-workshop-1-cggis.hub.arcgis.com/
SRPEDD (regional govt.)	SCBA Feasibility Study	https://scba-feasibility-study-srpedd.hub.arcgis.com/
DC	Economic Development	https://opendata.dc.gov/pages/mayor-economic-development

Resources and Next Steps

- Resources
 - GeoNet
 - Ask-hub@esri.com
 - Hub Newsletter
 - www.esri.com/hub
 - YouTube Playlists
 - ArcGIS Hub Twitter Feed

Resources

Find answers, get help, and connect with the ArcGIS Hub community with these helpful resources.



Blogs

Get product news you can use, written by Esri experts.



Documentation

Find out how to get started with ArcGIS Hub.



Training

Access everything you need for lifelong GIS learning, plus a learning plan designed for anyone interested in leveraging ArcGIS Hub.



Technical support

Our team is here to answer your questions and resolve issues.



Videos

Watch videos on our playlist to see how organizations use ArcGIS Hub to strengthen two-way engagement in their communities.



Story map

See how ArcGIS Hub is boosting collaboration and empowering decision-making in this Hubs Around the World story map.



GeoNet

Exchange ideas, solve problems, and connect with the ArcGIS Hub community.



Gallery

Check out examples in our gallery to see how others are using ArcGIS Hub and to get ideas for how you might use it too.



Smarter Government book

Browse galleries of examples and exercises supporting the leadership ideas and concepts presented in the Smarter Government book.

Todd Kingman
tkingman@esri.com



esri®

THE
SCIENCE
OF
WHERE®